

# NM 68/US 64 CORRIDOR STUDY

## La Posta Road to Camino de la Placita

### Phase 1B

CN 5100750

---

LOCAL GOVERNMENT STAKEHOLDERS MEETING

February 24, 2016

Taos Convention Center



# NM 68/US 64 CORRIDOR STUDY

## La Posta Road to Camino de la Placita

### Phase 1B

CN 5100750

---

**BUSINESS STAKEHOLDERS MEETING**

**February 24, 2016**

**Taos Convention Center**



# AGENDA

---

- 1:00 p.m. to 1:30 p.m. – Presentation
  - Introductions
  - Purpose of Meeting
  - Project Development Process
  - Summary of Phase A Study
  - Status of Phase B Study to Date
  - Funding and Schedule
  - Next Steps
- 1:30 p.m. to 2:30 p.m. - Questions and Comments

# AGENDA

---

- 3:00 p.m. to 3:15 p.m. – Open House
- 3:00 p.m. to 3:30 p.m. – Presentation
  - Introductions
  - Purpose of Meeting
  - Project Development Process
  - Summary of Phase A Study
  - Status of Phase B Study to Date
  - Funding and Schedule
  - Next Steps
- 3:30 p.m. to 4:30 p.m. - Questions and Comments

# PROJECT TEAM

---

- **NMDOT – Lead Agency**
- **Participating Agencies – Funding/Review**
  - Federal Highway Administration
  - State & Other Federal Agencies
- **Stakeholder Groups**
  - Local Government - Town of Taos & Taos County
  - Local Businesses
  - Taos Pueblo
- **Consultant Engineers**
  - Souder, Miller and Associates – Study Phase Consultant
  - Marron & Associates – Environmental Documentation & Public Involvement

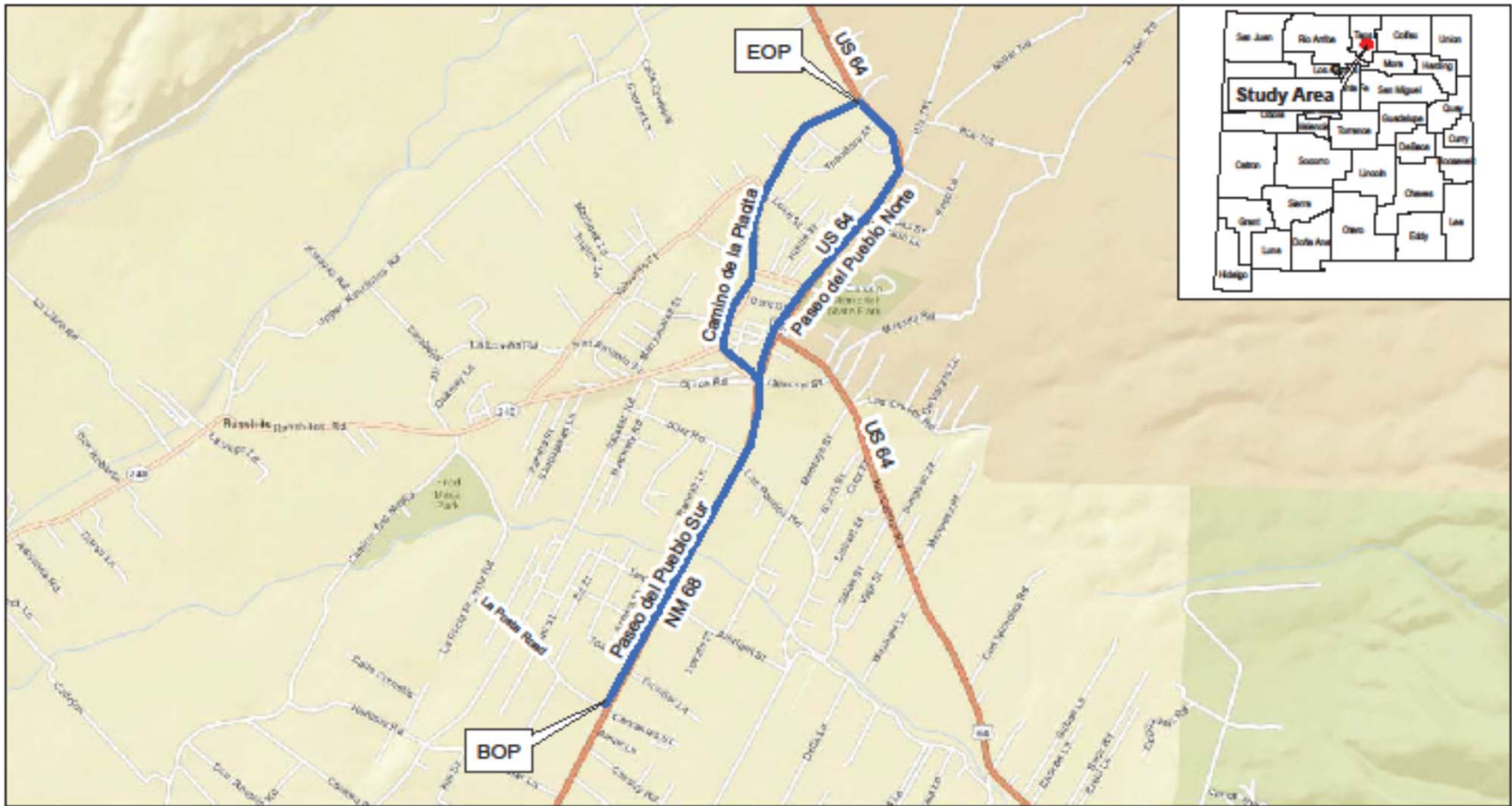
# PURPOSE OF MEETING

---


- Update on the Progress of the Study
- Provide Summary of Phase A Study – Initial Evaluation of Alternatives – Completed 6/2014
- Provide Status on Phase B Study – Detailed Evaluation of Alternatives – Ongoing
- Inform you about Project Schedule & Funding
- Obtain your comments, suggestions, and concerns

# PROJECT OVERVIEW

---



**Figure 2**  
**Study Area Map**

 Study Area

Taos, NM  
(Photorevised 1964)  
USGS 7.5' Quadrangle

T 25N, R 13E; Secs. 8 and 17  
and Fernando de Taos Land Grant  
Taos County, New Mexico



1:24,000

**NM 68-US 64 Corridor Study, Taos County, New Mexico**



# PROJECT HISTORY

## ● Prior Studies

- Taos By-pass Study, 1974, NMDOT
- Town of Taos Traffic Master Plan, 1990, Town of Taos
- Taos Traffic Network Improvement Study, 1997, Town of Taos
- Taos Relief Route Corridor Study, 2004, Taos County
- Taos Congestion Relief Route Study, 2008, NMDOT
- NM 68/US 64 Corridor Study, 2014

NEED TO ADDRESS TRAFFIC CONGESTION

# OTHER PROJECT ISSUES

---

- ◉ Existing Parking
- ◉ Pedestrian & Bicycle Facilities and Accessibility

# PROJECT DEVELOPMENT PROCESS

---

## ● NEPA PROCESS

- Transportation Planning and Project Development - Legislative Requirements, Regulatory Requirements, & other State and Federal Regulations

## ● ALIGNMENT STUDY

- Consistent with NMDOT's Location Study Procedures (consistent with the requirements of NEPA)
- 3 Phase Approach

# NMDOT Location Study Process



# Phase A Recommended Alternatives

---



- No. 1 - Coordinated Signal System
- No. 2 – Coordinated Signal System + 4-lane Improvements
- No. 3 – Coordinated Signal System + 4-lane Improvements + One-Way Pair

# Alternative 1 – Coordinated Signal System

---

- Replace Existing Signals
- Additional Signals where warranted
  - **Albright, Don Fernando, Civic Plaza**
- Optimize Signal Timing
- Signal Synchronization

# Alternative 1 – Coordinated Signal System

-  PROPOSED SIGNAL LOCATION
-  EXISTING SIGNAL LOCATION



N.T.S.

# Alternative 2 - Coordinated Signal System + 4-Lane Improvements

---

- **Signal Improvements**
  - **Signal Coordination Similar to Alternative 1**
  - **New Signals at Albright, Don Fernando, Civic Plaza**
- **Additional Capacity**
  - **4-lanes - La Posta Road to Camino de la Placita**



# Coordinated Signal System + 4-Lane Improvements + One-Way Pair

---

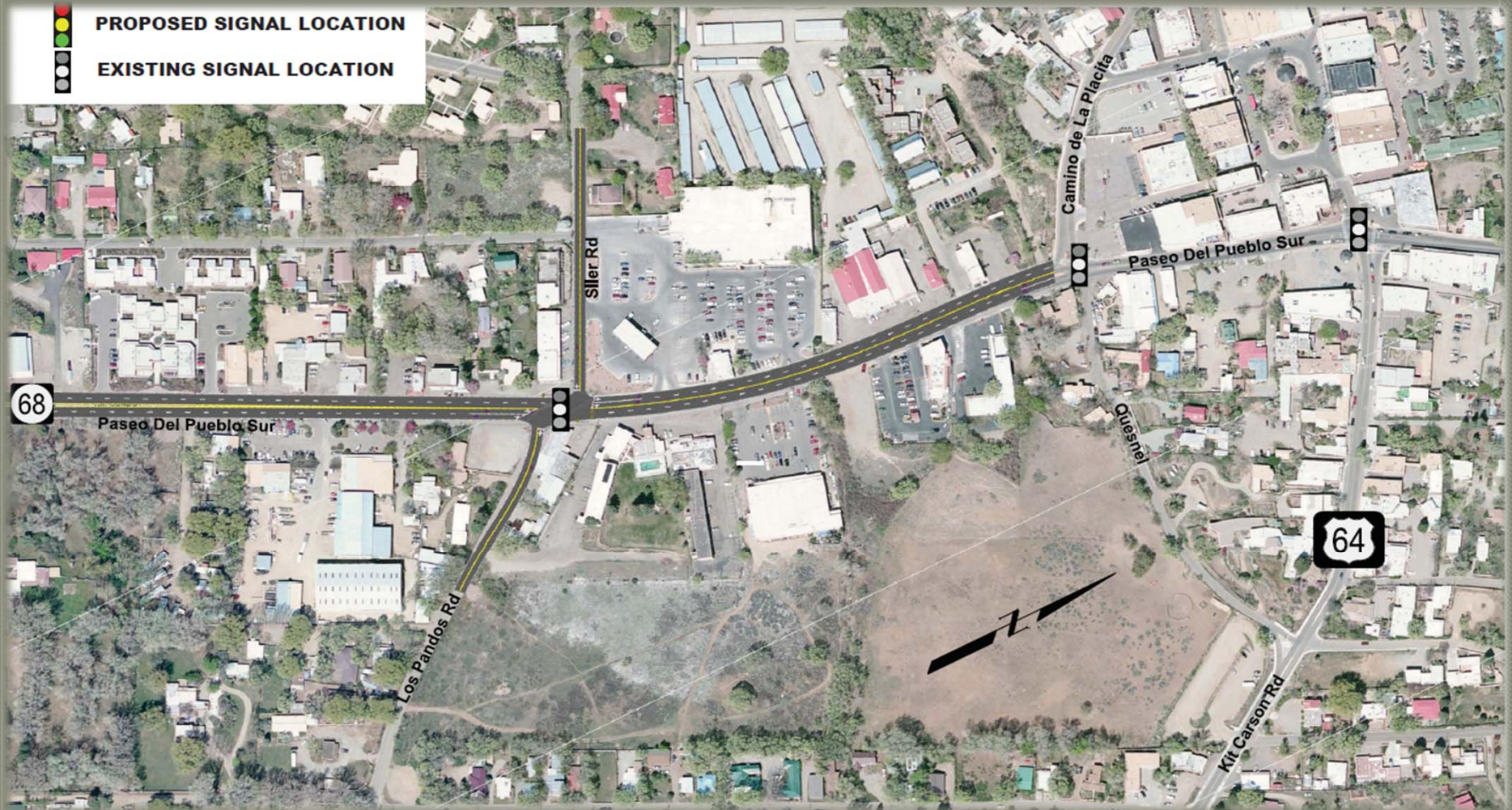
- **Signal Improvements**
  - **Signal Coordination Similar to Alternative 1**
  - **New Signals at Albright, Don Fernando, Civic Plaza, Town Hall, Valverde**
- **Additional Capacity**
  - **4-lanes - La Posta Road to Camino de la Placita**
- **Improved Traffic Operations**
  - **One-way Pair**

# Alternatives 2 and 3 4-lanes



# Alternatives 2 and 3

## 4-lanes



# Alternative 3 - One-Way Pair



# Alternative 3 - One-Way Pair



# OTHER PHASE A RECOMMENDATIONS

- Assess 2-Lane Cross-section from La Posta to Camino de la Placita
  - Reduced Right-of-way Requirements
  - Reduced Capacity
  - Downtown Cross-section
  - “Road Diet”
  - Address Pedestrian & Bicycle Accessibility
- Major Intersections Re-alignments to Improve Traffic Operations/Safety
  - Need for Additional Right-of-Way
  - Potential Relocation

# OTHER PHASE A RECOMMENDATIONS (cont.)

- Pedestrian & Bicyclist Improvements
  - Provide for Continuity
  - Right-of-way Requirements
- Assess Traffic Roundabouts
  - Additional Right-of-way Requirements
- Drainage Issues
  - Address Problem Spot Locations
  - Spring Ditch Water Quality Issues
- Off-Street Parking & Wayfinding
  - Who leads –Town of Taos or NMDOT

# TRAFFIC OPERATIONS AND LEVEL OF SERVICE

---



**Table 6.1**  
**Level of Service and Delays - P.M.**

Intersection		Exist	2023				2033			
#	Description		No Build	Alt. 1 -Signal Coord.	Alt. 2 - Signal Coord. + Widen	Alt. 3 - Signal Coord. + Widen + Oneway	No Build	Alt. 1 -Signal Coord.	Alt. 2 - Signal Coord. + Widen	Alt. 3 - Signal Coord. + Widen + Oneway
1	NM 68 & La Posta Rd/ Cervantes Dr	D 46.2	E 74.3	D 35.5	D 36.0	B 18.5	F 110.2	E 58.3	E 56.0	C 30.9
5	NM 68 & Tewa St/ Albright St	N/A	F 257.3	F 240.4	D 42.2	C 22.1	F 314.7	F 283.0	E 63.9	D 36.9
6	NM 68 & Siler Rd/Los Pandos Rd	F 125.2	F 171.3	F 157.5	C 29.0	D 48.3	F 222.4	F 194.8	D 47.0	D 42.5
7	NM 68 & Cam. de La Placita/Quesnel	D 37.1	D 53.7	C 22.6	C 27.6	F 388.7	E 79.1	C 32.5	D 39.4	F 389.3
8	NM 68 & US 64/N Plaza	F 173.3	F 230.4	F 161.2	F 163.5	F 111.4	F 284.2	F 196.8	F 211.4	F 112.5
10	US 64 & Civic Plaza Dr	E 64.5	F 105.2	E 73.9	E 73.7	B 19.3	F 152.2	F 114.6	F 115.1	B 18.4
19	US 64 & Cam. de La Placita/Rivali Ln	F 105.3	F 129.7	F 123.1	F 123.1	A 9.1	F 158.7	F 159.8	F 166.8	B 13.6
22	Cam. de La Placita Valverde St/Lund Ave	B* 11.6	B* 12.8	B* 12.8	B* 12.8	B 14.5	B* 14.5	B* 14.5	B* 14.5	B 19.5
23	Cam. de La Placita Town Hall Dr	N/A	N/A	N/A	N/A	B 11.2	N/A	N/A	N/A	B 14.3
24	Cam. de La Placita Civic Plaza Dr	C* 20.5	D* 28.3	D 35.2	C 34.3	C 33.6	E* 44.6	D 48.1	D 42.5	E 71.4
25	Cam. de La Placita Bent St	N/A	N/A	N/A	N/A	A 4.0	N/A	N/A	N/A	B 17.3
26	Cam. de La Placita Don Fernando St/N Plaza	D* 32.9	F* 50.1	C 30.3	C 28.7	C 31.8	F* 75.1	D 40.2	D 36.3	E 68.1
27	Cam. de La Placita NM 240/Ranchitos Rd	E 58.9	E 77.2	E 68.7	E 70.7	E 76.3	F 101.1	F 88.0	F 88.3	F 112.0
Summary Average of all Inter.		E 67.6	F 108.2	F 87.4	E 58.3	E 60.7	F 141.5	F 111.9	F 80.1	E 72.8

# PARKING AND PEDESTRIAN ISSUES

---



### Existing Parking and Pedestrian Issues Map







# PHASE B CONCEPTS

---

- **Signal Coordination**
  - **Standard Coordinated Signal System**
  - **Adaptive Signal System**
- **La Posta to Camino de la Placita**
  - **2 & 4 Lane Options**
- **Major Intersection Improvements**
  - **Intersection Re-Alignments**
  - **Traffic Roundabouts**
- **Downtown Improvements**
- **One-Way Pair**

# SIGNAL COORDINATION

---

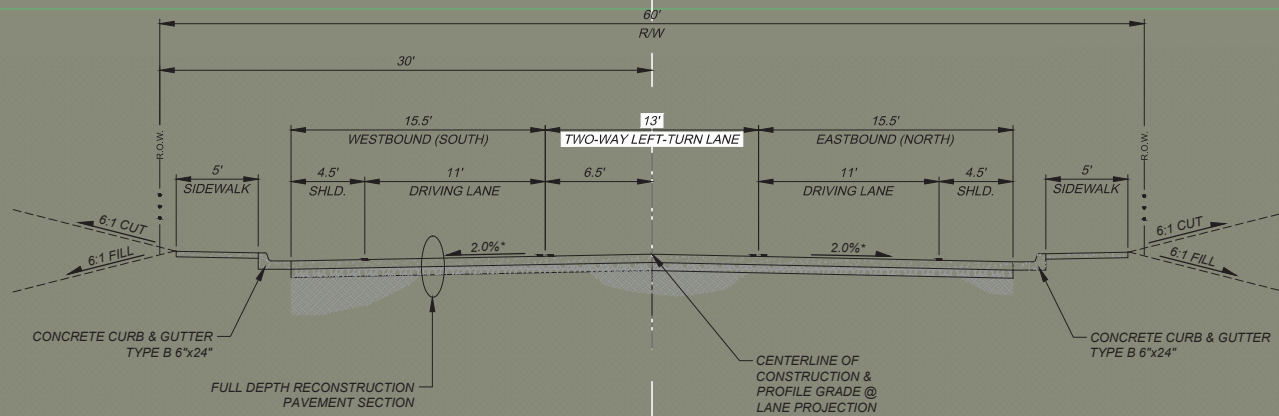
- **Standard Coordinated Signal System**
  - Programmed phased cycles based on time of day
  - Varies cycle length based on traffic demand
  - Single controlling (master) signal with basic demand algorithm
- **Adaptive Signal System > Being Assessed**
  - Individually (local) controlled signals
  - Communicative (global) network with other signals
  - Complex algorithms that modify based on demand

# La Posta to Camino de la Placita/Quesnal Roadway Alternatives

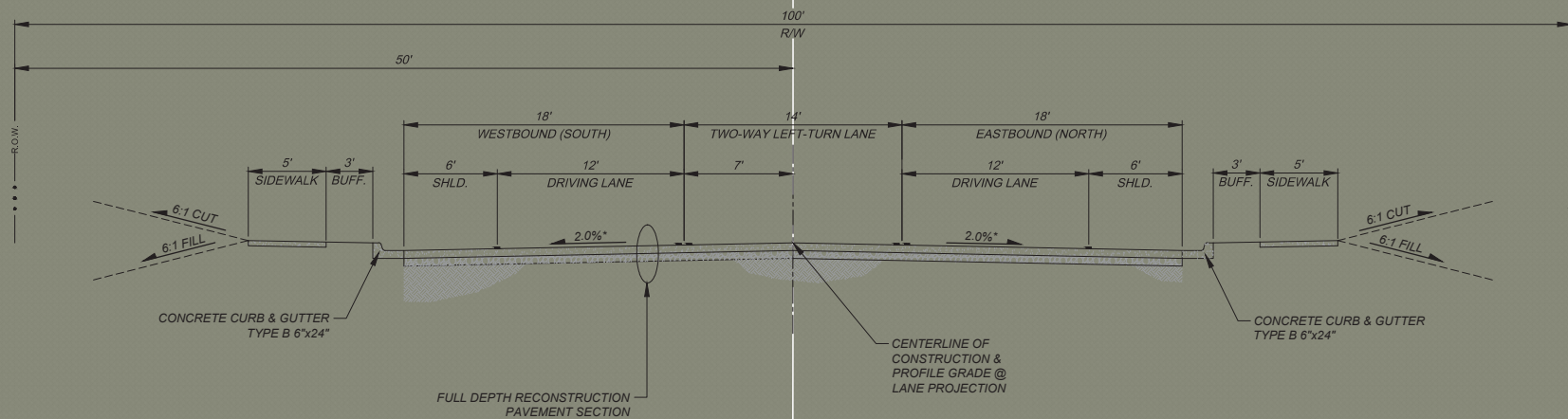
---



# 2-Lane Improvements Option

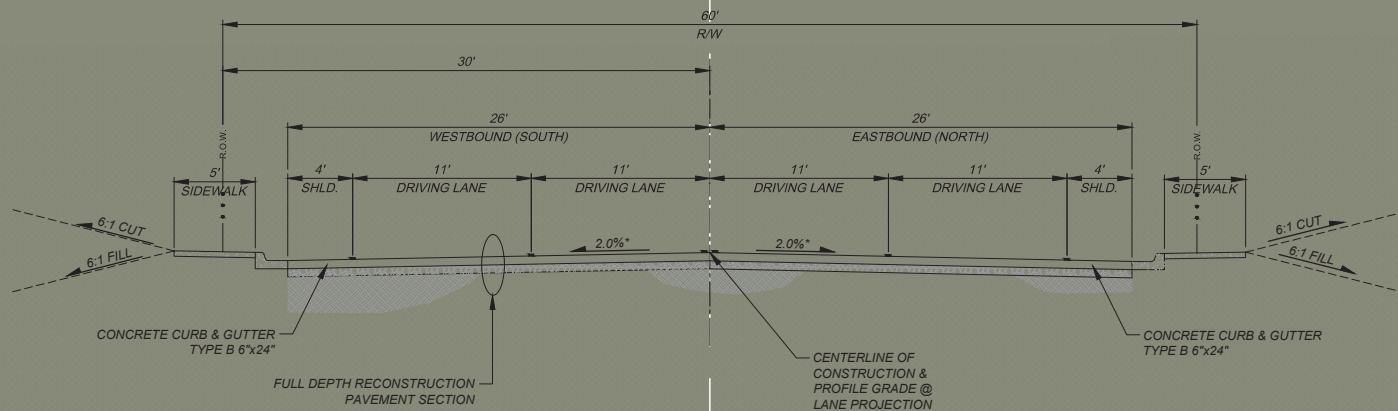


**NM 68 (PASEO DEL PUEBLO SUR) BETWEEN 450' SOUTH OF LOS PANDOS RD & CAMINO DE LA PLACITA**

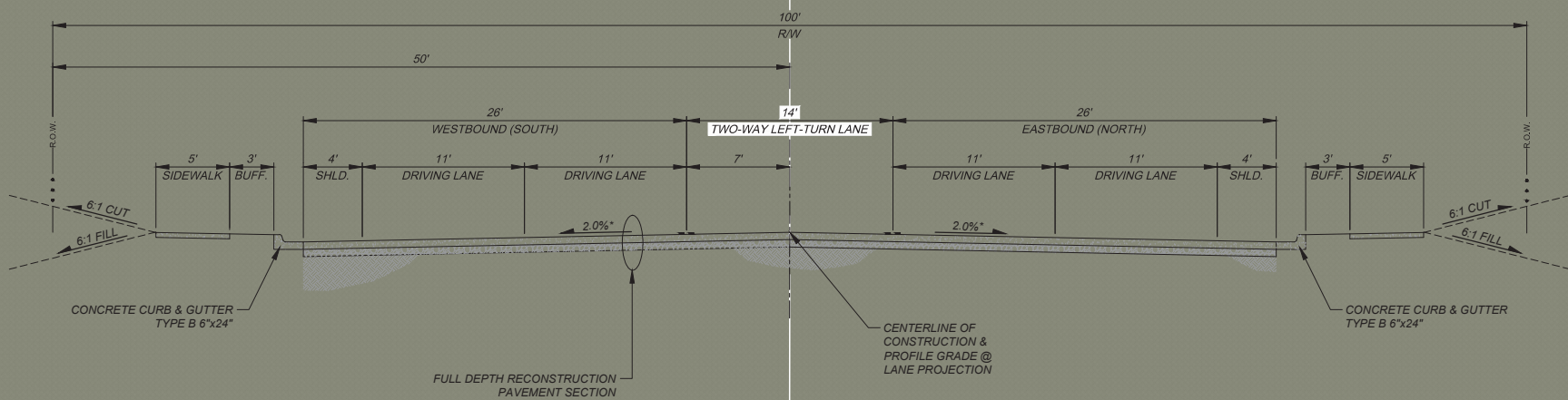


**NM 68 (PASEO DEL PUEBLO SUR) BETWEEN TOALNE ST & 450' SOUTH OF LOS PANDOS RD**  
 BOP TO TOALNE ST - R/W IS 75' ON EACH SIDE OF CENTERLINE

# 4-Lane Improvements Option



**NM 68 (PASEO DEL PUEBLO SUR) BETWEEN 450' SOUTH OF LOS PANDOS RD & CAMINO DE LA PLACITA**



**NM 68 (PASEO DEL PUEBLO SUR) BETWEEN TOALNE ST & 450' SOUTH OF LOS PANDOS RD**  
BOP TO TOALNE ST - R/W IS 75' ON EACH SIDE OF CENTERLINE

# La Posta to South of Los Pandos Existing



# La Posta to South of Los Pandos 2-Lane



# La Posta to South of Los Pandos 4-Lane



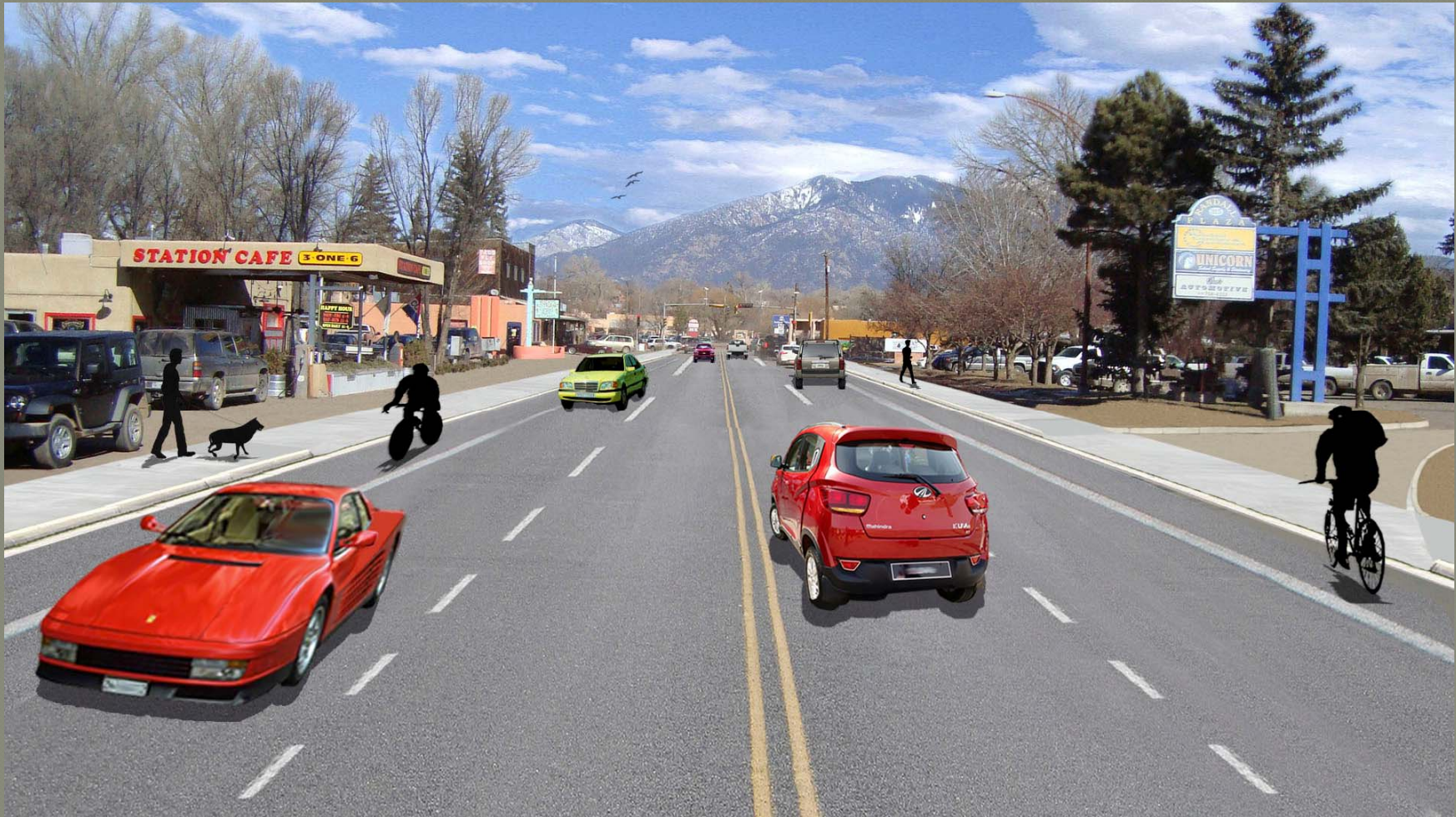
# South of Los Pandos to Camino de la Placita Existing



# South of Los Pandos to Camino de la Placita/Quesnal 2-Lane



# Los Pandos to Camino de la Placita/Quesnal 4-Lane





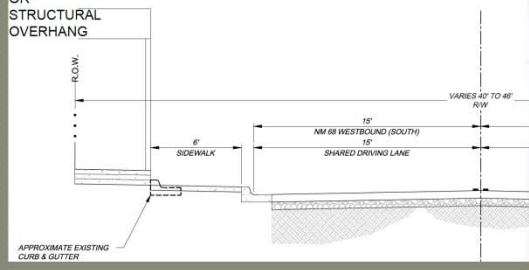
# 4-Lane Widening Issues

---

# DOWNTOWN ALTERNATIVES



HISTORIC STRUCTURES MAY PREVENT ALTERATIONS TO SIDEWALK OR STRUCTURAL OVERHANG



HISTORIC STRUCTURES MAY PREVENT ALTERATIONS TO SIDEWALK OR STRUCTURAL OVERHANG

# MAJOR INTERSECTION RE-ALIGNMENT ALTERNATIVES

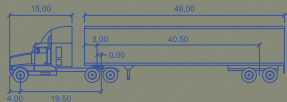
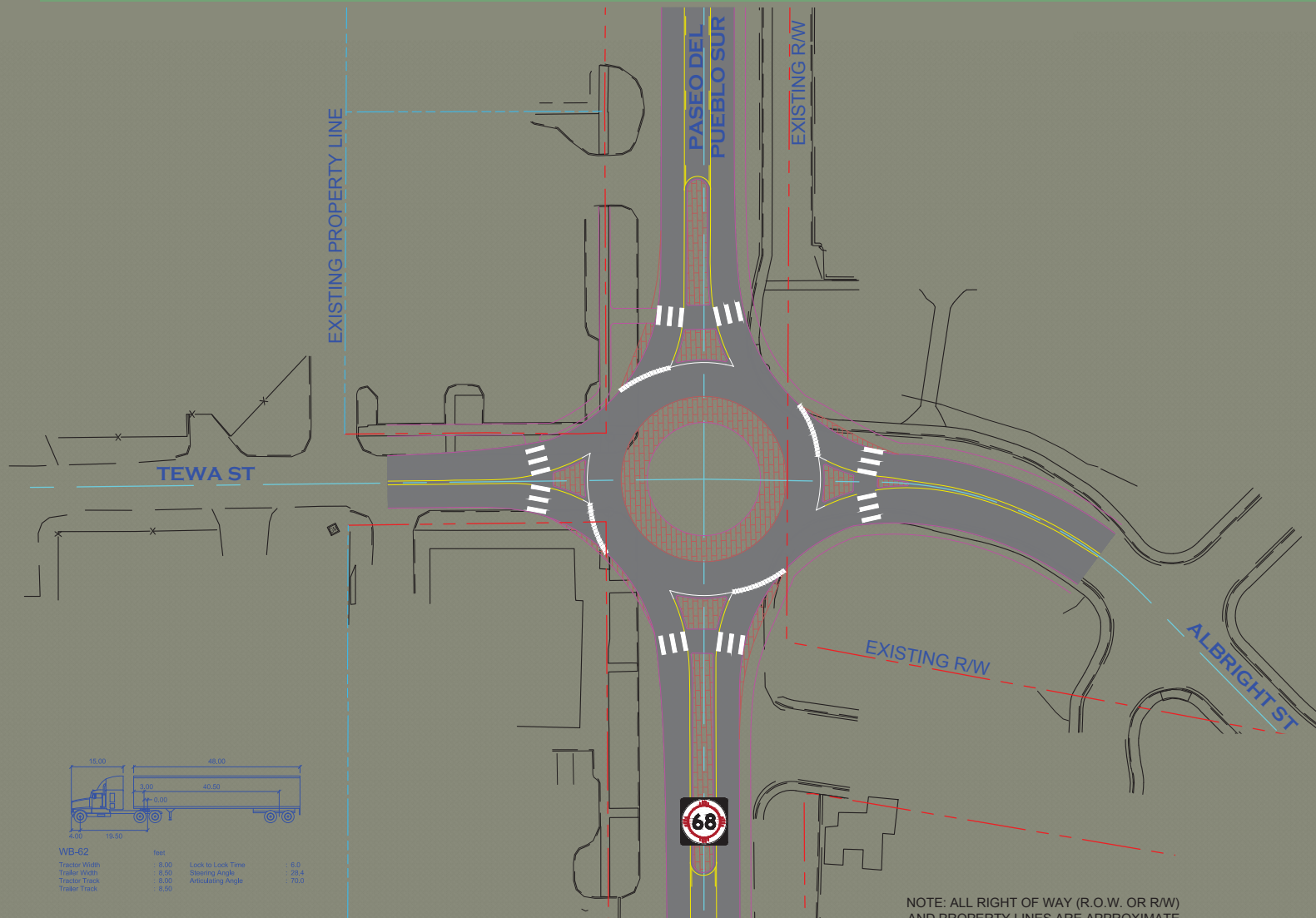
---

# ALBRIGHT/TEWA INTERSECTION OPTIONS

---

- Signalized
- 1-Lane Roundabout
  - Conjunction with the 2-Lane Option
- 2-Lane Roundabout
  - Conjunction with the 4-Lane Option

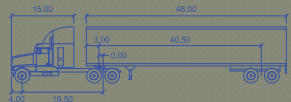
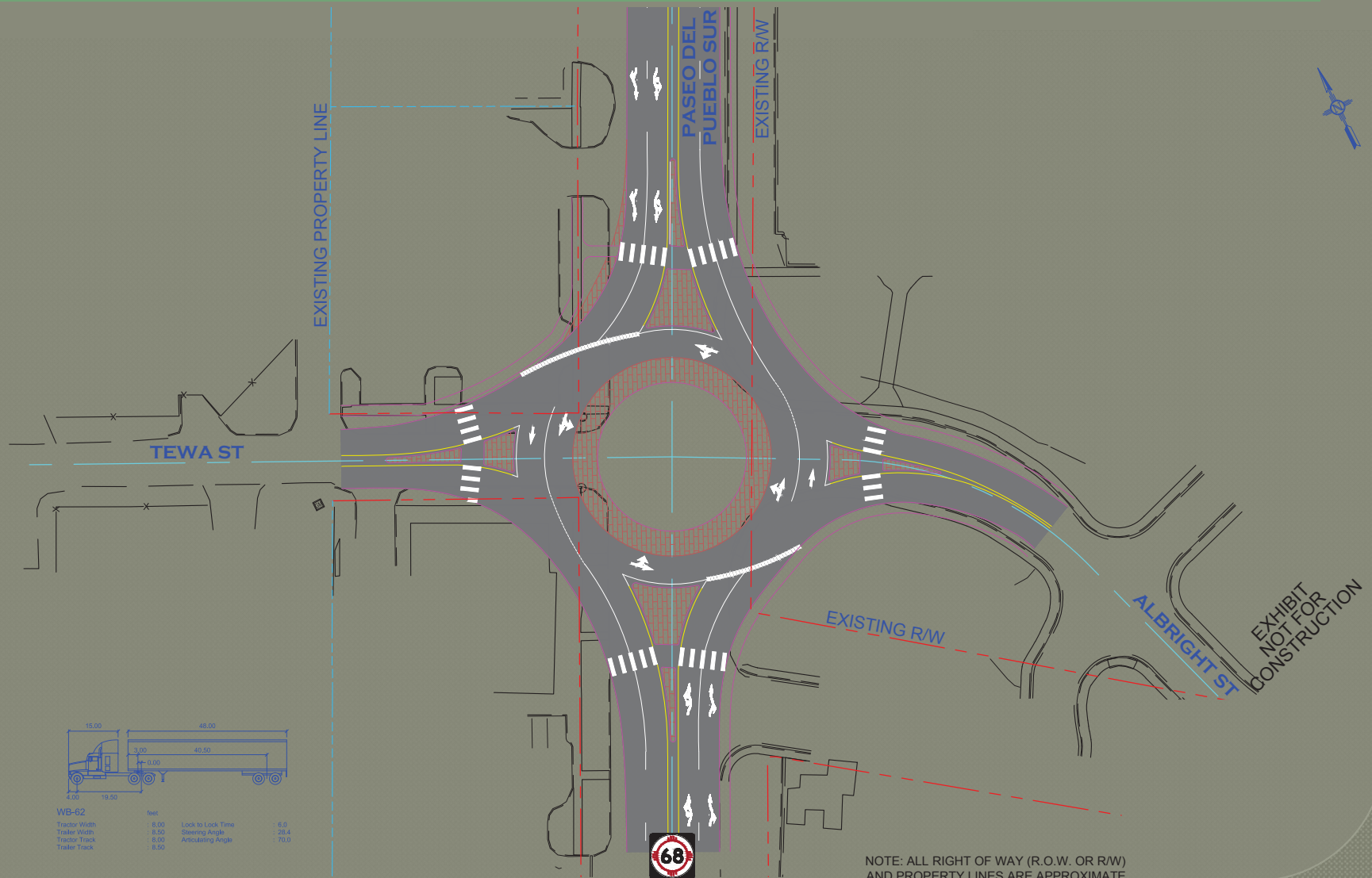
# 1-Lane Roundabout



WB-62		feet	
Tractor Width	15.00	Lock to Lock Time	6.0
Tractor Length	19.50	Steering Angle	20.4
Tractor Track	4.00	Articulating Angle	70.0
Trailer Track	8.50		

NOTE: ALL RIGHT OF WAY (R.O.W. OR R/W)  
AND PROPERTY LINES ARE APPROXIMATE

# 2-Lane Roundabout



WB-62		feet	
Tractor Width	3.00	Lock to Lock Time	6.0
Trailer Width	8.50	Steering Angle	28.4
Tractor Track	6.00	Articulating Angle	70.0
Trailer Track	8.50		

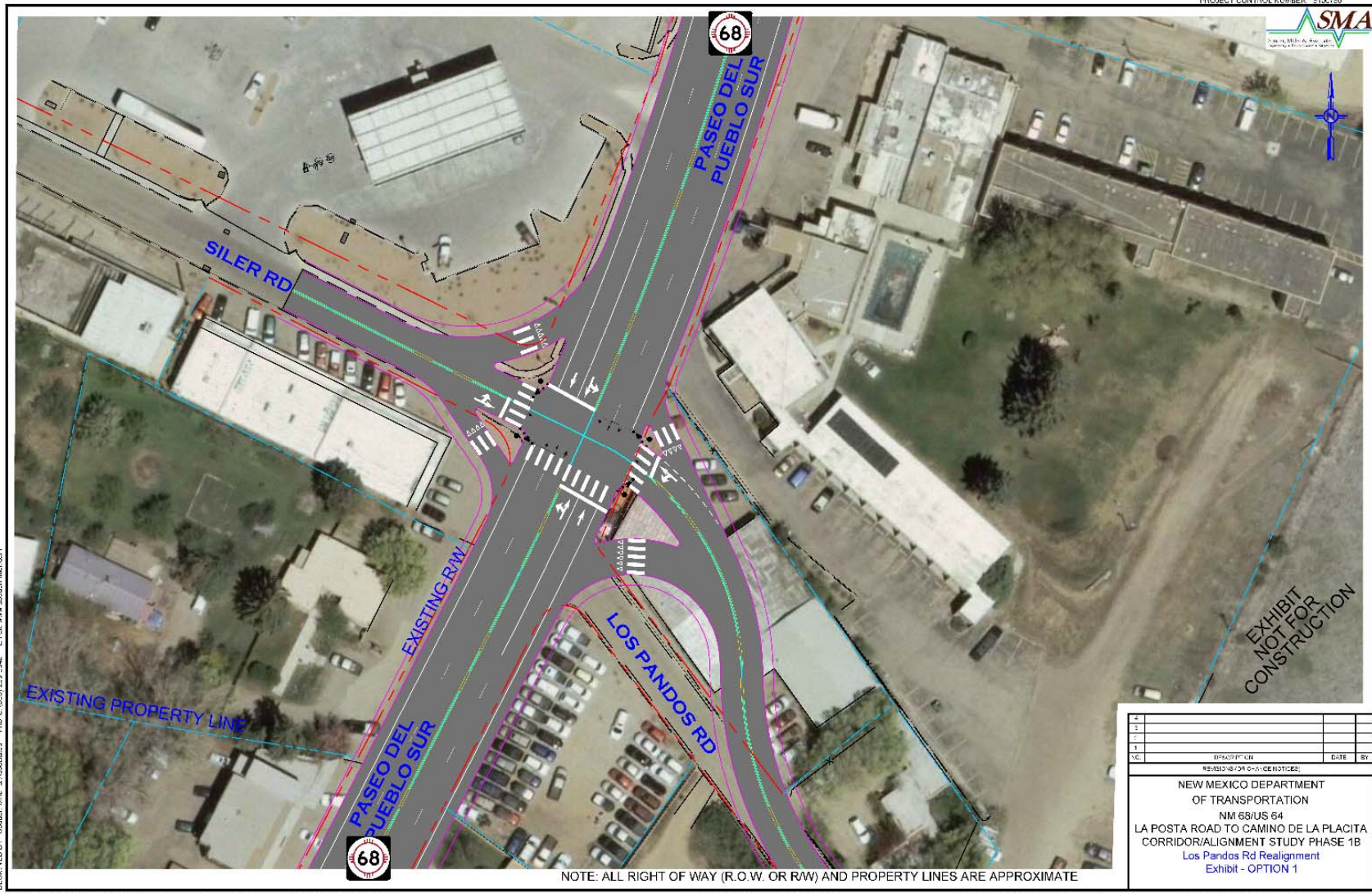
NOTE: ALL RIGHT OF WAY (R.O.W. OR R/W) AND PROPERTY LINES ARE APPROXIMATE

# SILER/LOS PANDOS INTERSECTION OPTIONS

---

- Realignment of Los Pandos
- Offset Double Tee Intersection

# Los Pandos Rd Realignment Opt 1



DESIGNED BY: Souder, Miller & Associates Phone: (505) 259-7942 E-mail: www.soudermiller.com

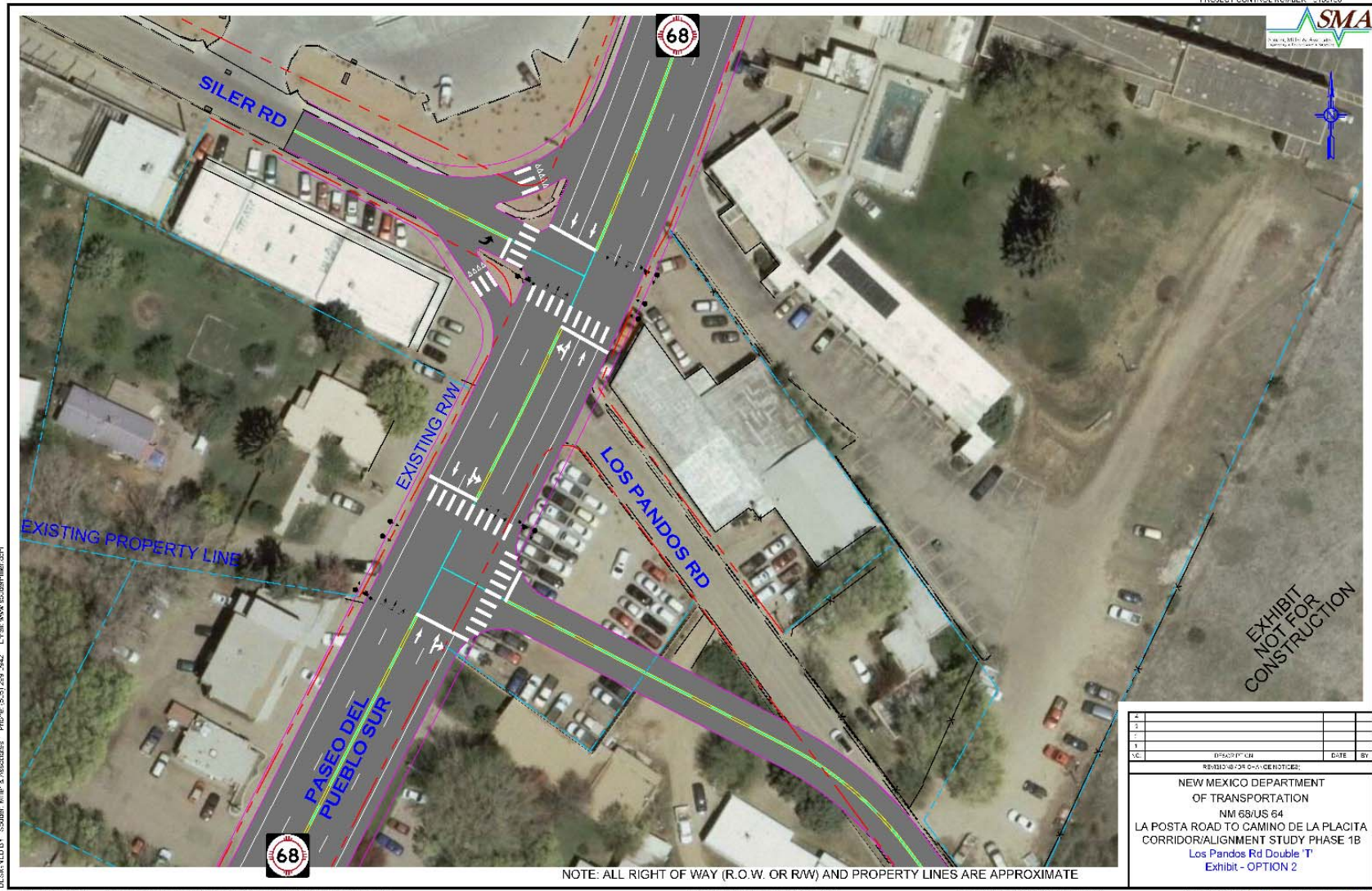
NOTE: ALL RIGHT OF WAY (R.O.W. OR R/W) AND PROPERTY LINES ARE APPROXIMATE

NO.	DESCRIPTION	DATE	BY

NEW MEXICO DEPARTMENT  
 OF TRANSPORTATION  
 NM 68/US 64  
 LA POSTA ROAD TO CAMINO DE LA PLACITA  
 CORRIDOR/ALIGNMENT STUDY PHASE 1B  
 Los Pandos Rd Realignment  
 Exhibit - OPTION 1



# Los Pandos Rd Realignment Opt 2



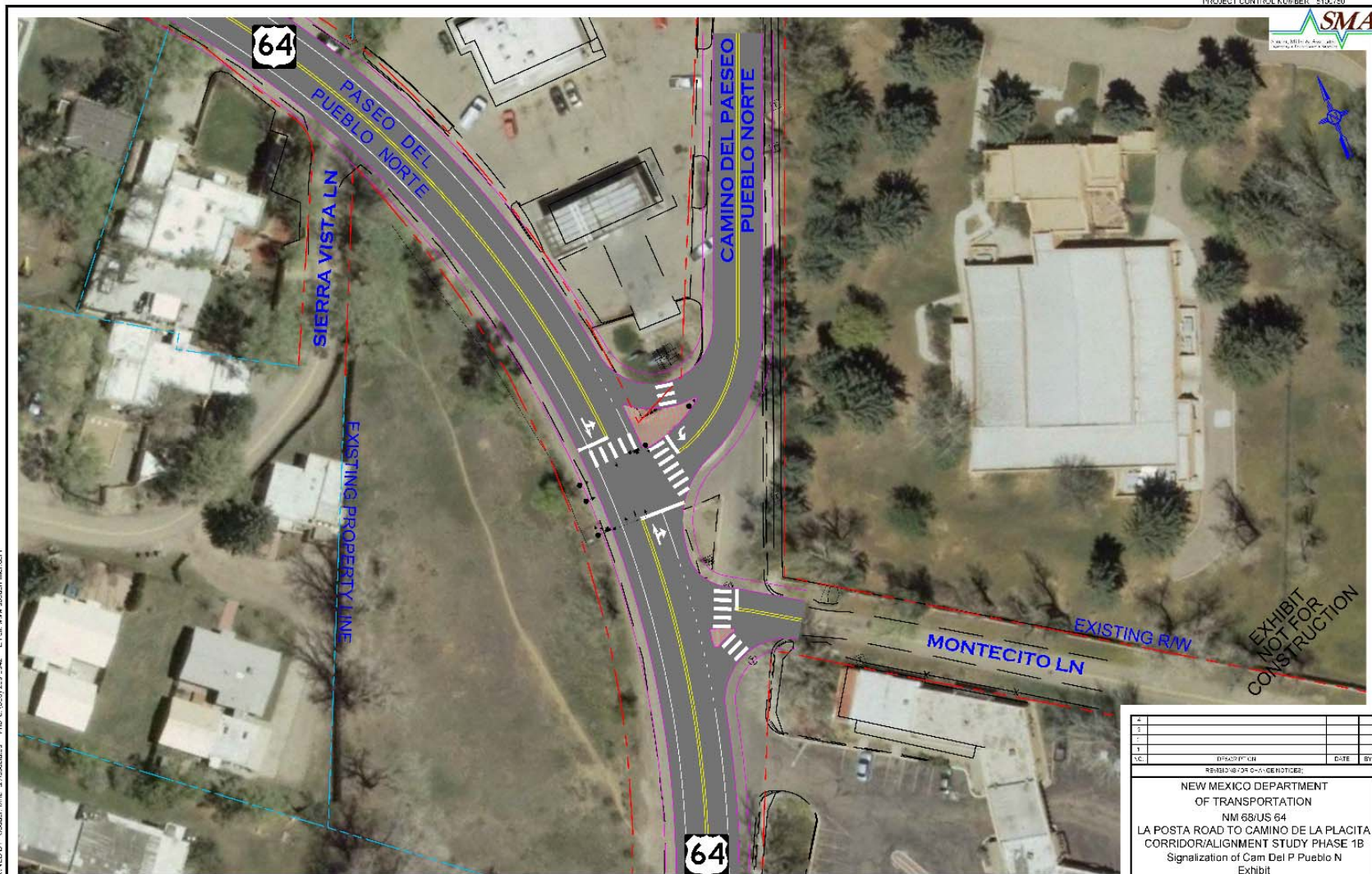
DESIGNED BY: Souder, Miller & Associates, Phone: (505) 259-7642, E-mail: www.soudermiller.com

# CAMINO DEL PASEO PUEBLO NORTE INTERSECTION OPTIONS

---

- Signalization and Minor Realignment
- Signalization and Major Realignment

# Minor Realignment



PROJECT CONTROL NUMBER: 5102750



DESIGNED BY: Souder, Miller & Associates Phone: (505) 259-2942 Email: www.soudermiller.com

NOTE: ALL RIGHT OF WAY (R.O.W. OR R/W) AND PROPERTY LINES ARE APPROXIMATE

DATE: 10/20/10 11:00 AM  
 DRAWING NO.: P-07-VIC-01-064 V-08 1/25/10 10:00 AM  
 PROJECT NO.: 5102750 PLAN SHEET: 1B1199 PUEBLO REALIGN EXHIBIT

DESIGNED BY: Souder, Miller & Associates

NEW MEXICO PROJECT NO.: 5102750

DRAWING SCALE: 1" = 20' SHEET NO.: XBT-01 PUEBLO

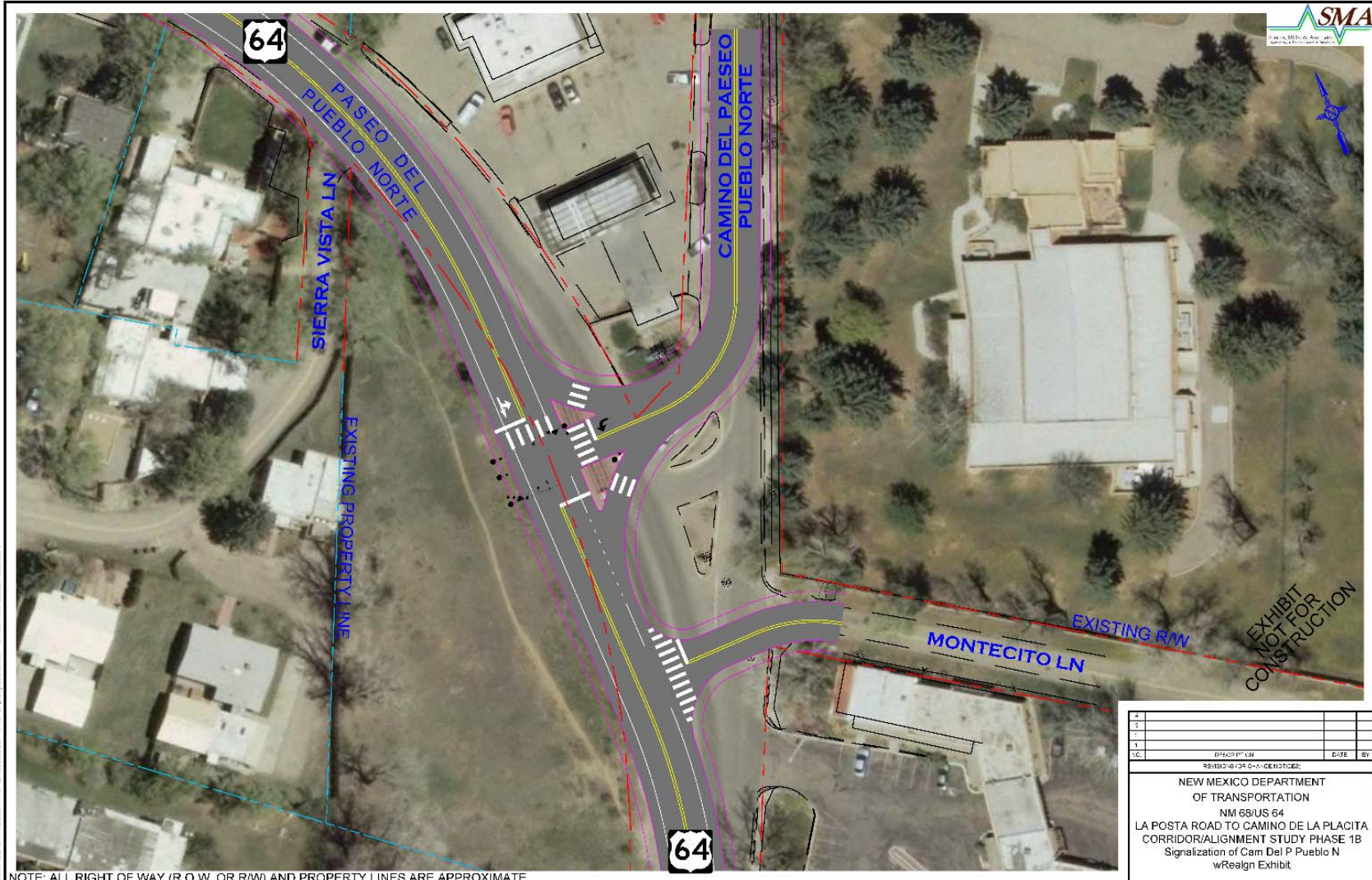
NO.	DESCRIPTION	DATE	BY
1			
2			
3			
4			

REVISIONS FOR DESIGN NOTICES:

NEW MEXICO DEPARTMENT OF TRANSPORTATION  
 NM 68/US 64  
 LA POSTA ROAD TO CAMINO DE LA PLACITA  
 CORRIDOR/ALIGNMENT STUDY PHASE 1B  
 Signalization of Cam Del P Pueblo N  
 Exhibit

# Major Realignment

PROJECT CONTROL NUMBER: 510750



DESIGNED BY: Souder, Miller & Associates Phone: (505) 359-2542 E-mail: www.soudermla.com

NOTE: ALL RIGHT OF WAY (R.O.W. OR R/W) AND PROPERTY LINES ARE APPROXIMATE

2			
3			
4			
5			
6			
7			
8			
9			
10			
11			
12			
13			
14			
15			
16			
17			
18			
19			
20			
21			
22			
23			
24			
25			
26			
27			
28			
29			
30			
31			
32			
33			
34			
35			
36			
37			
38			
39			
40			
41			
42			
43			
44			
45			
46			
47			
48			
49			
50			
51			
52			
53			
54			
55			
56			
57			
58			
59			
60			
61			
62			
63			
64			
65			
66			
67			
68			
69			
70			
71			
72			
73			
74			
75			
76			
77			
78			
79			
80			
81			
82			
83			
84			
85			
86			
87			
88			
89			
90			
91			
92			
93			
94			
95			
96			
97			
98			
99			
100			

REVISIONS/CHANGES/NOTES:

NEW MEXICO DEPARTMENT OF TRANSPORTATION  
 NM 68/US 64  
 LA POSTA ROAD TO CAMINO DE LA PLACITA  
 CORRIDOR/ALIGNMENT STUDY PHASE 1B  
 Signalization of Cam Del P Pueblo N  
 wRealign Exhibit

DESIGNED BY: Souder, Miller & Associates  
 DRAWN BY: HEVIN O'BERT  
 DATE: 12/15/10

DESIGNED BY: Souder, Miller & Associates

NEW MEXICO PROJECT NO. GN 510750

DRAWING SCALE: 1" = 50' SHEET NO. XBT-02PUEBLO

# DRAINAGE & SPRING DITCH

---

- Spot Locations
- Spring Ditch – Water Quality Issues

# RIGHT-OF-WAY

---

- ◉ Roadway Widening
- ◉ Intersection Improvements

# UTILITIES

---

- **Impacts with any Roadway Widening or Excavation Activities**

# CURRENT SCHEDULE

---

- **Alignment Study Phase B**
  - Report by May, 2016
    - Project Recommendations
    - Priority Plan
- **Phase B Public Involvement Opportunities**
  - Local Government Stakeholder Meeting – February, 2016
  - Local Business Stakeholder Meeting – February, 2016
  - Taos Pueblo Stakeholder Meeting – Mid-March, 2016
  - Public Involvement Meeting – Late March or Early April, 2016
- **Phase C, Environmental Clearances – Start Summer, 2016**
- **Design – Start Summer, 2016**
- **Construction - 2017**



# Project Funding

---

- \$11.3 Million State Funds Available – NM 518 to Camino de la Placita
- \$2.2 Million Federal Funds Available – La Posta to Camino de la Placita
- Total Funds Available = \$13.5 Million
  - Phase 1 – NM 518 to La Posta Road - \$5 Million
    - Construction Fall, 2016
  - Phase 2 – La Posta Road to Camino del Paseo Pueblo - \$8.5 Million
    - Will need to prioritize projects
    - Will need to program funding for other identified improvements

# Questions/Comments

---